



Technical Bulletin

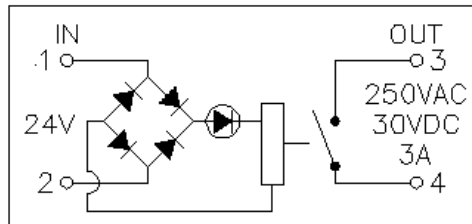
Number: 033
Date Issued: 11/03/03
Expiration Date: 11/03/04

Subject/Key Words:	Robot and Queue Product Sensor Relay Wiring Change			
Classification:	<input checked="" type="checkbox"/> Informational	<input type="checkbox"/> Mandatory	<input type="checkbox"/> Safety Alert	<input type="checkbox"/> PM Impact
	<input type="checkbox"/> Warranty Impact	<input type="checkbox"/> Purchase Parts	<input type="checkbox"/> No Charge For Parts expires ___/___/___. Reference this TB# when ordering NC parts.	
Applicable Akrion Procedures:	None			
Parts/Reference Documents:	Drawings 202879 and 202880			
Attachments:	None			

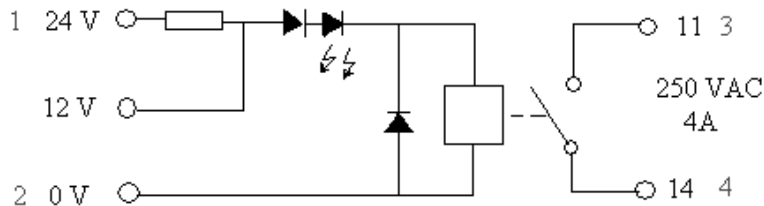
Issue: Efezor Brand Sensors (202908) used for product detection on both GAMA and Rearmount wet station robots use a 4 amp, 24VDC relay (RLY1B0065) in their circuit. This relay had a specific pin configuration and associated schematic printed on its side. This pin configuration and schematic were also included on drawings 202879 and 202880 issued with the kits for upgrading sensors from older SICK sensors to the newer Efezor sensors.

At some unknown time, the relay vendor began supplying a new relay for this associated part number with a different pin configuration. These changes have not been incorporated into the drawings and have caused confusion in the field.

Solution: Below is the original relay configuration and pin labeling:



Below is the new relay configuration. The original 1, 2, 3, and 4 wire/pin designations are shown in red. Wire per this illustration



If you have technical questions or require more information, please contact Akrion Technical Support Department via e-mail at techsupport@akrion.com. Authorized service personnel can obtain copies of the latest Akrion procedures and controlled documents from the Akrion Document Control department at doccontrol@akrion.com. Customers must direct all inquires to their local Akrion field service representative. (Form QA1656F1A)